



IDSpecto.enVIEW.Portal

Visualization of energy data for your customers

Although frameworks for smart meter roll-outs are country-specific, one requirement must be met in all countries: utilities and energy companies have the duty to inform residential customers soon and precisely about their consumption habits.

IDSpecto.enVIEW.Portal by VIVAVIS is a cost-efficient and easy-to-handle solution; with this solution end consumers comprehend and may optimize their individual consumption and their costs at any time anywhere.

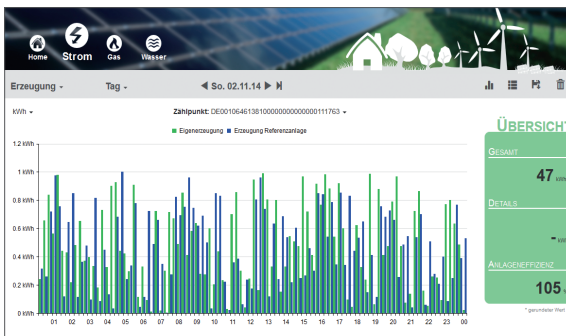
In detail

- Clear and comprehensible visualization of any medium, eg electricity, gas, water, heat, etc
- Clearly structured energy data visualization including tariffs and costs
- Consumption and costs forecasts
- Visualization of plants and customer master data
- Visualization and monitoring of feed-in systems in accordance with German Renewable Energy Sources Act (EEG)
- Display optimized for browser, smartphone or tablet
- Design customizable to meet CI requirements of customers

Focused on your energy, mobile and easy to understand IDSpecto.enVIEW.Portal visualizes consumptions from time series and register values of all measurable sectors – such as electricity gas heat and water – and displays the precise costs. Thus, users get all relevant information about their energy at any time anywhere at one glance whether in a browser, via tablet computer or smartphone. The display is optimized for the respective device. Besides measured values captured Today, IDSpecto.enVIEW.Portal also offers an outlook for tomorrow. The forecast function may even display forecast consumptions and costs for the next measurement and billing periods.



Browser, smartphone, tablet computer – consumers may retrieve their energy data anywhere



Energy balance of a plant in accordance with German law (EEG) compared with a reference plant

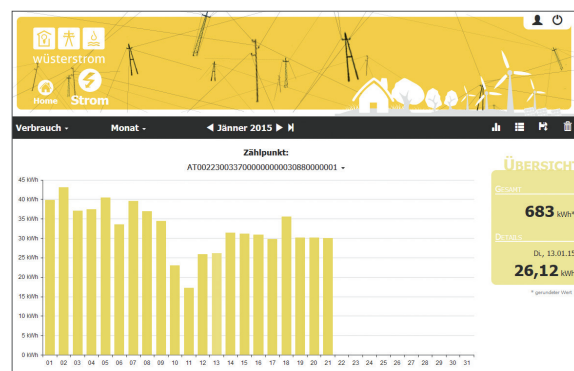
The application can be enhanced with additional functions to display and monitor plants in accordance with the German Renewable Energy Sources Act (EEG) when used as energy portal for meter operators in competitive or associated meter operation. This way you can visualize any kind of plants and control points with their timestamps for generation and feed-in. Your own behaviour can be optimized by illustrating energy consumption and your requirement ratio. In addition, IDSpecto.enVIEW.Portal offers specific functions for monitoring you can use to quickly recognize performance losses. Comparing with reference plants, for example, is useful to determine whether there is a problem with your own plant or whether you make full use of its potential.

Based on a high-performance and scalable system

Whether in interaction with IDSpecto or as separate portal solution with external data supply: you can integrate IDSpecto.enVIEW.Portal into every existing infrastructure. Data storage as well as access to the content to be displayed in the portal is managed in the background. Rights of portal users that grant access to data content as well as additional functions can be easily set by the administrator of the portal in the integrated user administration. Administrative tasks are reduced to a minimum thanks to a simple registration function and the option to process user properties and user rights in bulk. New functions are centrally loaded to existing portal applications and thus immediately available for users. This way, providing or updating apps becomes completely obsolete.

For you as utility or energy company, IDSpecto.enVIEW.Portal serves as instrument for lasting customer loyalty. Besides sheer visualization of energy data, there is enough space for additional information about your company – for example, you may give tips and provides advice for appropriate dealing with energy or you display offers, recommendations and adverts. Other service functions can be linked with the monitoring function for plants in accordance with German law (EEG).

To sum up, with IDSpecto.enVIEW.Portal you have a flexible tool at hand that supports your implementation of individual business models adjusted to your customers' requirements. And of course everything is always based on reliably processed metered data.



Display can be adjusted to your company's CI