



## VIVAVIS Dashboard

### Quick Overview of your Systems

The energy landscape is constantly changing. Concomitant with the integration of renewable energies, e-vehicles and decentralisation, it becomes necessary to monitor these systems and detect possible weak points in time.

Data is now not only collected in so-called expert systems for a specific application, but with the advent of the Internet of Things (IoT), i.e. networking with sensor technology, this information must be displayed **across systems**. The **VIVAVIS Dashboard** presents data from expert systems and IoT as a mash-up, as a linkage of many diverse sources.

Information content is therefore amplified. This allows for faster decisions. This is vital for situations where a single control system, metering or energy management system alone is not sufficient anymore.

Information about the entire system is clearly presented as maps, tables, time series and log entries and thus leads to more competent decisions.

### In detail

- Mash-Up of heterogenous data types
- Fast overview about your system
- Anomaly detection

## The Challenge of Modern Energy Grids

In energy grids, there is now a continuous exchange of large amounts of data in real time between generation and uptake. Digital solutions provide information about the state of the entire grid and its components.

Therefore it is necessary to make decisions based on the complete range of digital information. In this case information from a single expert system is not sufficient; it is necessary to condense the data from several data sources into meaningful results.

## The Solution

**VIVAVIS AG's unique competency** in the energy market is that it offers a variety of expert systems for a wide range of applications. Through internal consolidation, these can now be linked together in a uniform manner. In addition, **VIVAVIS** is pushing the integration of sensor technology into its energy systems.

The **VIVAVIS Dashboard** visualises data from the control system (**HIGH-LEIT**), metering system (**IDSpecto.DAYOS**), **EP2000** and third-party systems such as ERP and sensors. All data is thus available in a uniform format. Easily configurable panels allow a quick insight into relevant facts, available for all members of the organisation.

Information is presented in a clear form as maps, tables, time series and log entries. This leads to more competent decisions.

## Product Description

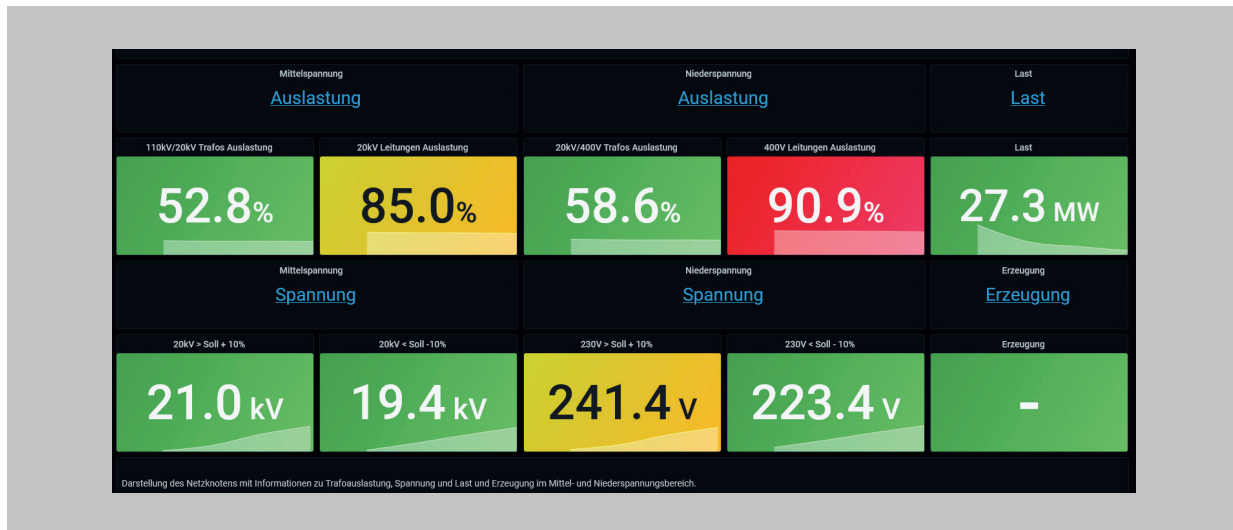
The **VIVAVIS Dashboard** displays data across systems, i.e. wherever the SCADA system, control system or metering system alone are not sufficient.

Functionally, it consists of two parts: A **data aggregation part** (data pool) and the actual **dashboard (cockpit view)**.

The **data buffer** contains all data from expert systems and additional systems, such as sensors and data from freely available sources, e.g. weather or environmental data, etc. The dashboard thus contains data from the control system. In the Dashboard application, data can be selected from the data pool and be displayed in a wide number of freely selectable visualisations.



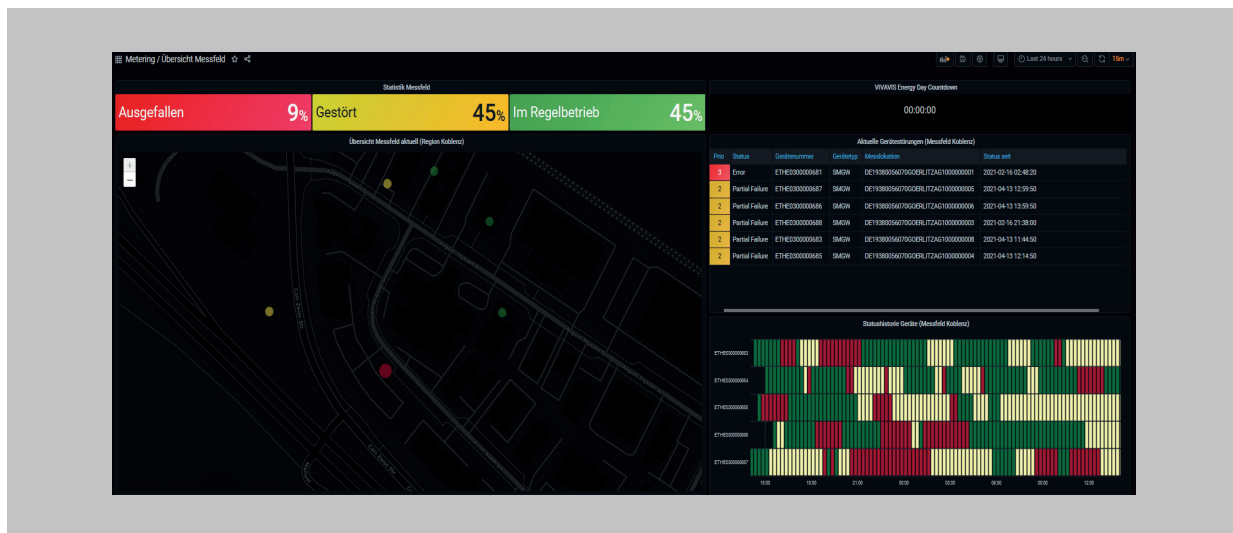
## For Grid Operators



In energy grids, a continuous exchange of large amounts of data takes place in real time between generation and uptake.

In this scenario, the **VIVAVIS Dashboard** provides important information on network status, the interaction of components and possible areas for action. For example, it facilitates the detection of power quality problems caused by photovoltaic systems. Furthermore, grid overloads due to uncontrolled charging of e-vehicles could be viewed.

## For Metering



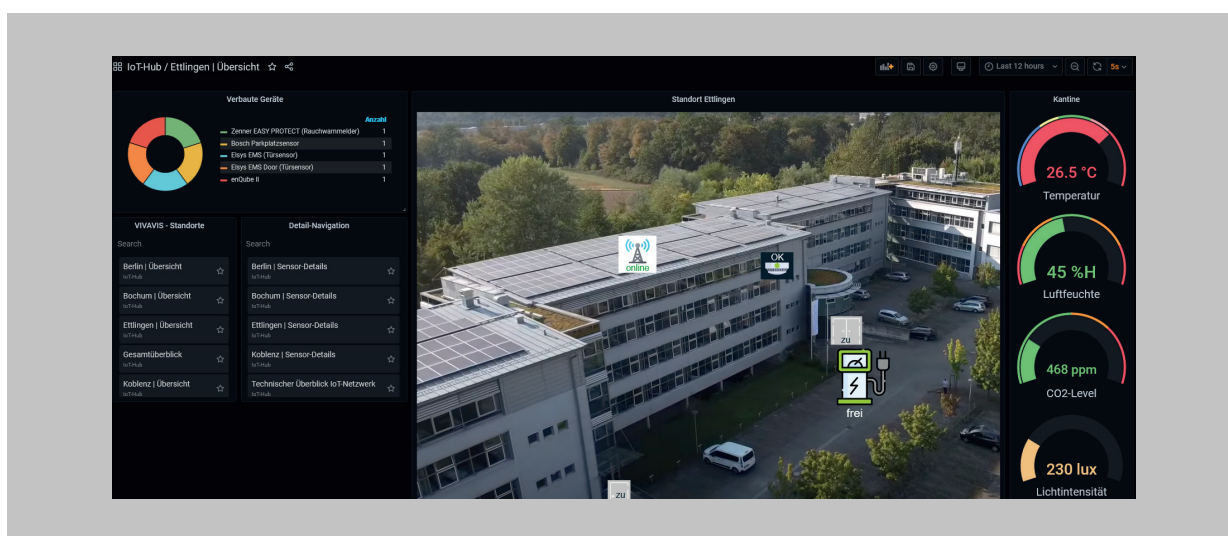
The **VIVAVIS Dashboard** also provides added value for metering. It provides an overview of all actions for field devices, failures and substitute values.

## For Water Management



Whether elevated tanks, rainwater retention basins or pumping stations! Users can get a quick overview of plant components, all across platforms.

## For Smart Districts



The dashboard gives a good overview of the neighbourhood and all built-in sensors.

### Easy Analysis of Complex Dynamic Data

The **VIVAVIS Dashboard** provides necessary information exactly when it is needed. All data is uniformly available in the data pool. Easily configurable panels provide a quick insight into relevant facts, for all members of the organisation.

The rapid availability of KPIs means that important decisions can be made more quickly.